

Social Firms Europe CEFEC 35th Annual Conference

**SOCIAL ECONOMY STIMULATING THE
TRANSFORMATIVE POTENTIAL OF
COMMUNITIES**



REVES
Réseaux Economiques des Villes & Régions de l'Europe du Nord
European Network of Cities & Regions for the Social Economy

Social Firms Europe
CEFEC

**SOCIAL ECONOMY STIMULATING
THE TRANSFORMATIVE POTENTIAL
OF COMMUNITIES**

ANNUAL CONFERENCE 2021

ONLINE EVENTS

24th of March 2021 2:00 PM - 5:00 PM CET	EMPLOYMENT AND GROWTH Green economy in improving employment
16th of April 2021 9:00 AM - 12:30 PM CET	PARTICIPATORY CO-DESIGN OF DEVELOPMENT STRATEGIES IN RURAL AND PERIPHERAL AREAS
28th of April 2021 2:00 PM - 5:00 PM CET	UNLOCKING THE POTENTIAL OF LOCAL ACTION FOR GLOBAL GOOD Foundations supporting local social economy for 2030 Agenda

Social Firms Europe

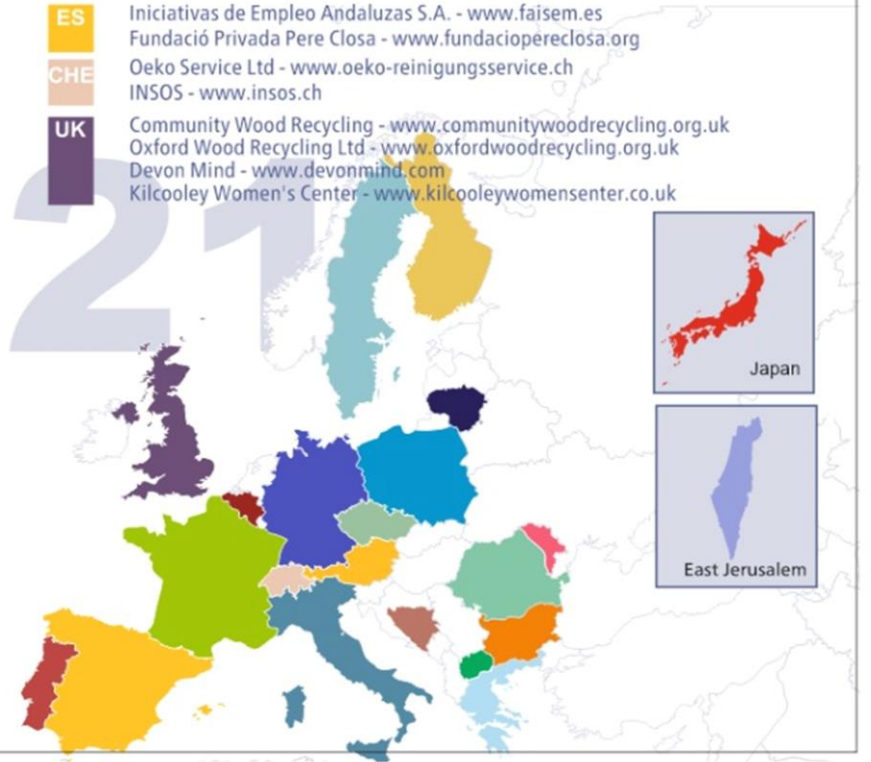
CEFEC

Members



- AU** Pro Mente Austria - www.promenteaustria.at
Die Querdenker - www.die-querdenker.at
- BE** Association Interregionale de Guidance de la Sante - www.aigs.bl
Mental Health Europe - www.mhe-sme.org
WEB - Work-experience Companies - www.webwerkt.be
- BG** European Development Foundation - www.facebook.com/EUDevelopment
- BIH** Foundation for Local Economic Development - emina.abrahamsdotter@proffs.ba
- CZ** FOKUS - www.fokus-praha.cz
- FI** Finnish Central Association of Mental Health - www.mtkl.fi
VATES Foundation - www.vates.fi
Woodfox Oy Ltd - www.woodfox.fi
Valo-Valmennusyhdistys ry - www.valo-valmennus.fi
- FR** Association Piotr - Tchaadaev - jean-yves.febery@wanadoo.fr
GIP-FCIP de Normandie - www.ac-normandie.fr
AFIDEL - www.cocagnehautegaronne.org
- DE** BAG Inklusionsfirmen e.V. - www.bag-if.de
Christiane Haerlin (occupational Therapist) - christiane.haerlin@netcologne.de
Diozesan-Caristasverband fur das Erzbistum - www.caritasnet.de
Meto Salijevic - salijevic@web.de
Azusa Kasuga - azusakasuga@hotmail.com
Hand in Hand-Werk gGmbH - www.hhw-soltau.de
Jule Henny Wevering - julewevering@gmail.com
Afb Group - www.afb-group.de
- EJ** Gerold Schwarz - gerold.schwarz@gmail.com
- EL** Society of Social Psychiatry - www.ekpse.gr
- IT** Legacoopsociali - www.legacoopsociali.it
Lorenzo Toresini (medical doctor-psychiatrist) - lorenzotoresini@libero.it
Duemilauno Agenzia Sociale - www.2001agsoc.it
CIRCLE - www.circle-association.com
CITTA AZZURRA - www.cittazzurra.org
Alberto Stenico - www.albertostenico.it
- JPN** Jinzaikyoikusha - www.jk-s.co.jp
NPO S.S.S. - www.npo-sss.or.jp

- LT** VSI Zmogiskuju istekliu stebesenos ir pletros biuras - www.zispb.lt
- MD** AREAP - www.areap.org
- PL** KLOS Sp z o.o. - www.klos.org.pl
Szczecińska Szkoła Wyższa Collegium Balticum - www.cb.szczecin.pl
Social Cooperative RESTART - www.facebook.com/spoldzielczy.lodz
Browar Spółdzielczy – Social Cooperative DALBA - www.browarspoldzielczy.com
- PT** ARIA - www.aria.com.pt
- MK** Association Community Development Institute Tetovo - www.irz.org.mk
- RO** Institutul Bucovina - www.bucovinainstitute.org
AEDU - www.asoc-edu.ro
Asociația Consultantilor in Dezvoltare Comunitara (ACDC) - www.acdcromania.ro
Mihai Tudor - www.innovatingsociety.com
- SE** Rysseviken AB - www.rysseviken.se
Tanke & Handling I Sverige - www.tankeochhandling.coop
SKOOP! National Umbrella - www.skoop!.coop
Globulen ideell forening - www.landulla.com/globulen
Ulla Landenmark - ullalandenmark@telia.com
- ES** Iniciativas de Empleo Andaluzas S.A. - www.fajsem.es
Fundació Privada Pere Closa - www.fundaciopereclosa.org
- CHE** Oeko Service Ltd - www.oeko-reinigungsservice.ch
INSOS - www.insos.ch
- UK** Community Wood Recycling - www.communitywoodrecycling.org.uk
Oxford Wood Recycling Ltd - www.oxfordwoodrecycling.org.uk
Devon Mind - www.devonmind.com
Kilcooley Women's Center - www.kilcooleywomenscenter.co.uk



The network of social economy enterprises for the development of the North-East Region - R.I.E.S. POCU / 449/4/16/128512



*The general objective of the project is to support the integration into the labor market of people from vulnerable groups leaving in rural areas. This contributes to the development of social entrepreneurship of the Northeast Region by increasing managerial and entrepreneurial skills for **120 people, setting up 21 social enterprises and creating minimum of 105 jobs.***

Total grant: 2.809.570 euro

More details can be found here:

<https://www.facebook.com/RIES.NordEst>

few recommendations

- improving the legislation and create the norms for practice
- we need to intensify the communication actions on rural areas
- training opportunities for local authorities and social entrepreneurs
- priorities within RRF , ESF and other financial mechanism to support SE start –up
- to increase the cooperation/networking between SE and authorities
- to include SE as a key actors for rural development strategies
- reserve contracts should not be just an option

CONTACT



Petru-Vasile Gafiuc, SFE CEFEC General Secretary

Secretariat of SFE CEFEC

Zamcei Street, no. 17, 720214 Suceava, Romania
Phone/Fax: +40 230 524128 / Mobile: +40 743 793 001

E-mail: socialfirmseurope@gmail.com

Website: www.socialfirmseurope.eu

Facebook: <https://www.facebook.com/SocialFirmsEurope>